

Managing an inter-congregational global network, the case of Talitha Kum

Sr. Gabriella Bottani, smc May 21st, 2020



Program of Church Management Faculty

Pontificia Università della Santa Croce

www.talithakum.info

Human Trafficking is a complex multidimensional and multifactorial crime, which affects millions of people worldwide, in every country.

The anti-trafficking communities, require a coordinated and multidisciplinary approach, connecting the regions where the recruitment take place and where people are exploited, to share information, to support the return of survivors (when desired).

Talitha Kum, *which means stand up*, promotes networking for freedom and human dignity, responding with good to the evil caused by traffickers. The criminals and exploiters are very well networked and organized, mobilizing every year a very rentable illegal business of billions of US\$.

Talitha Kum, the International Network of Consecrated Life Against Trafficking in Persons, responsibly and creatively since implements the decision taken in 2001 by the **INTERNATIONAL UNION OF SUPERIORS GENERAL (USIG)** Plenary Assembly:

*“to work **in solidarity with one another within our own religious communities** and in the countries in which we are located to address insistently at every level the abuse and sexual exploitation of women and children with particular attention to the trafficking of women which has become a lucrative multinational business”^[i]*





Talitha Kum Networks are in 92 Countries

Organized in:

46 Networks at national level

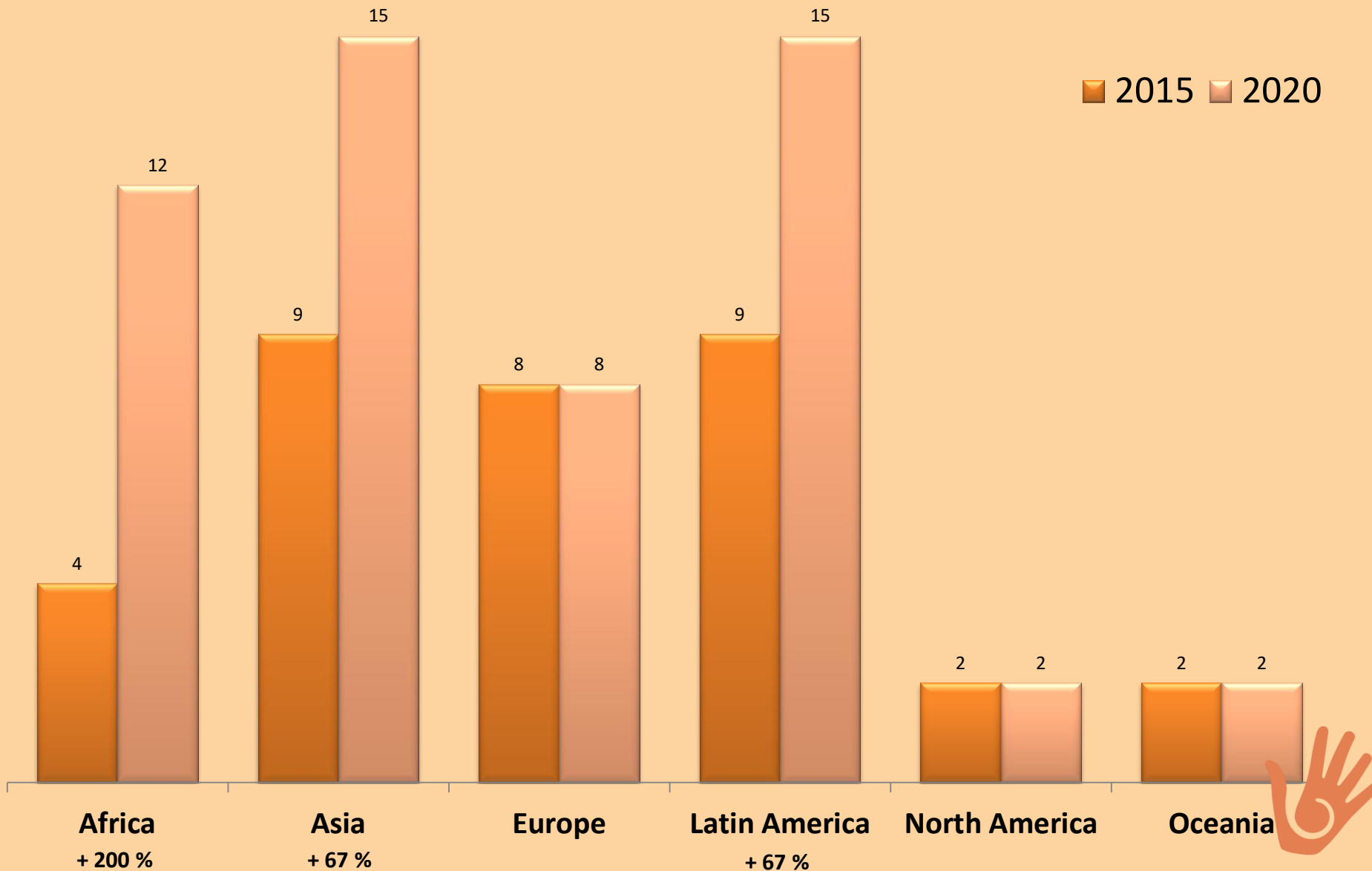
8 Networks at regional/continental level

3 Continental Coordination Teams:

Americas, Asia and Oceania

1 International Coordination Committee

Talitha Kum Networks in 2015 and 2020



The major activities of TK Networks

Activities by area and continent
2015

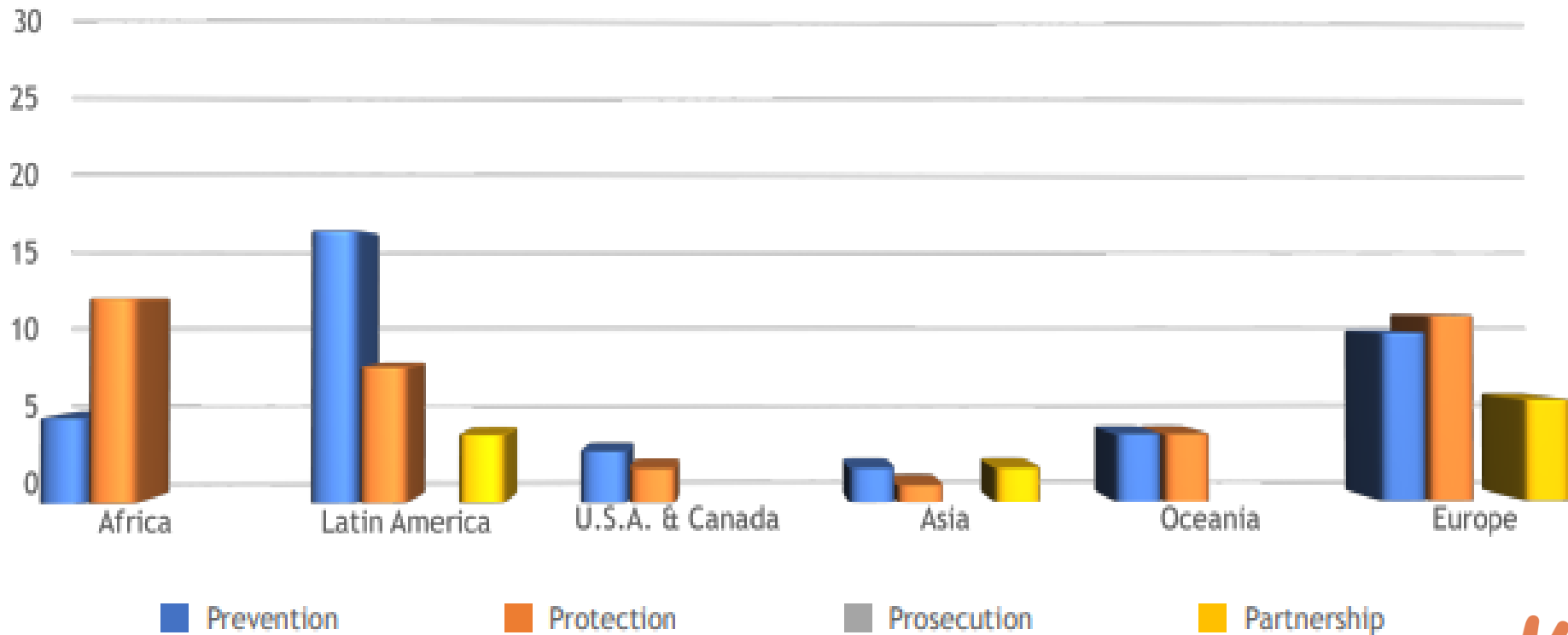


FIGURE 4.2: ACTIVITIES BY AREA AND CONTINENT, 2015.



The major activities of TK Networks

Activities by area and continent
2018

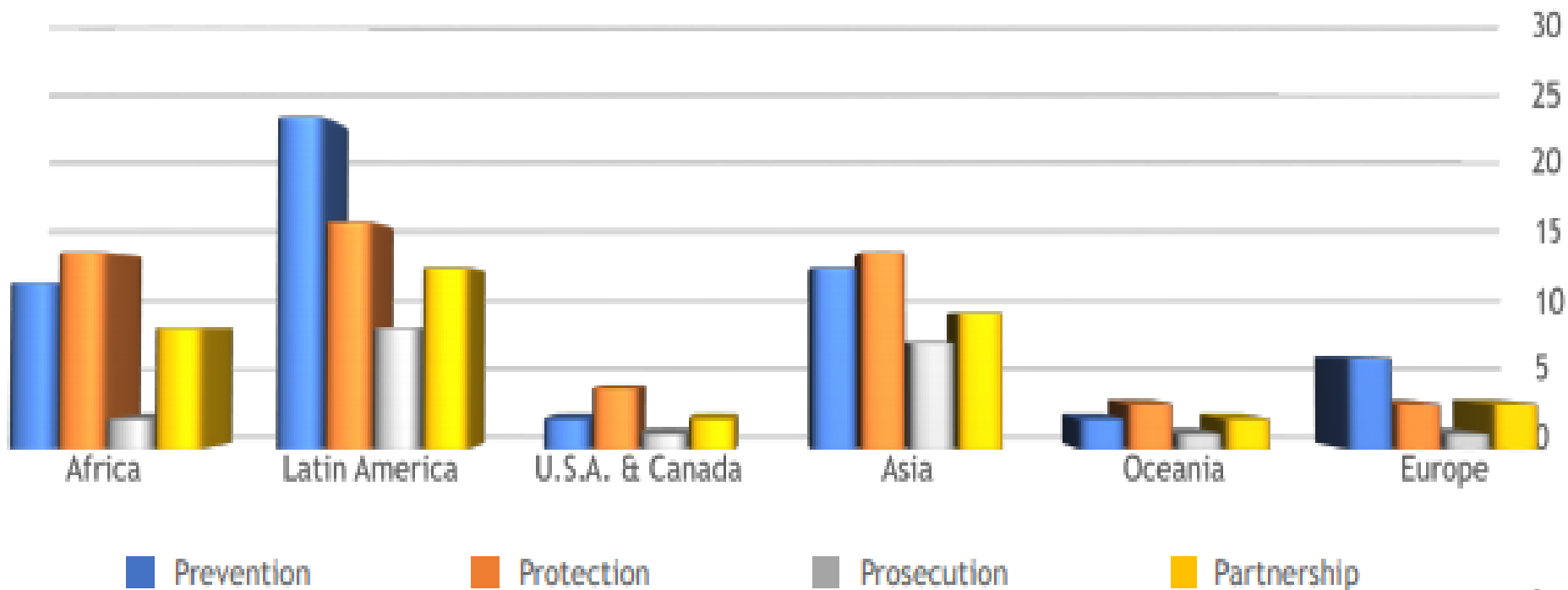


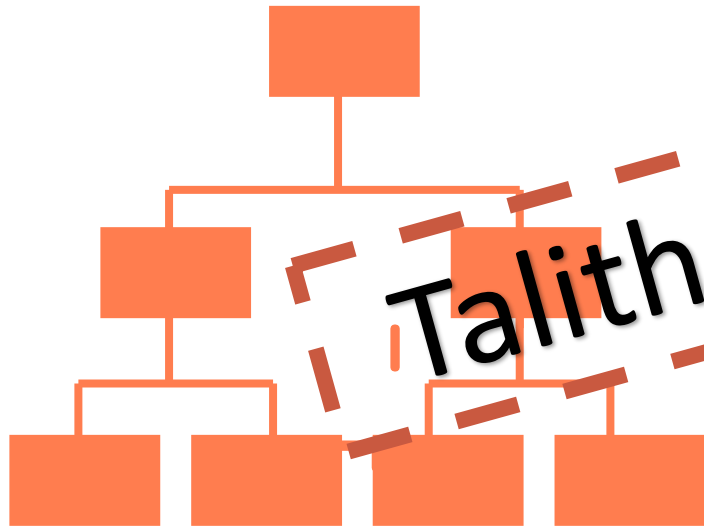
FIGURE 4.3: ACTIVITIES BY AREA AND CONTINENT, 2018.



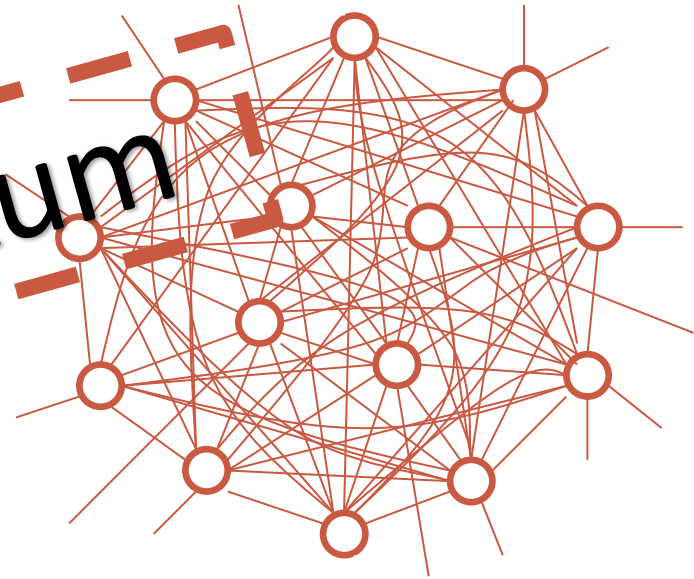
Talitha Kum Network

Building deep trust from the bottom up!

Pyramidal System



Network



Talitha kum

The pillars :

Leaders: Women religious



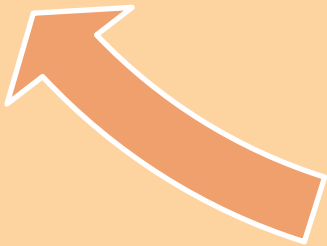
The Glue: The Charisms / Spirituality. Church Social Teaching



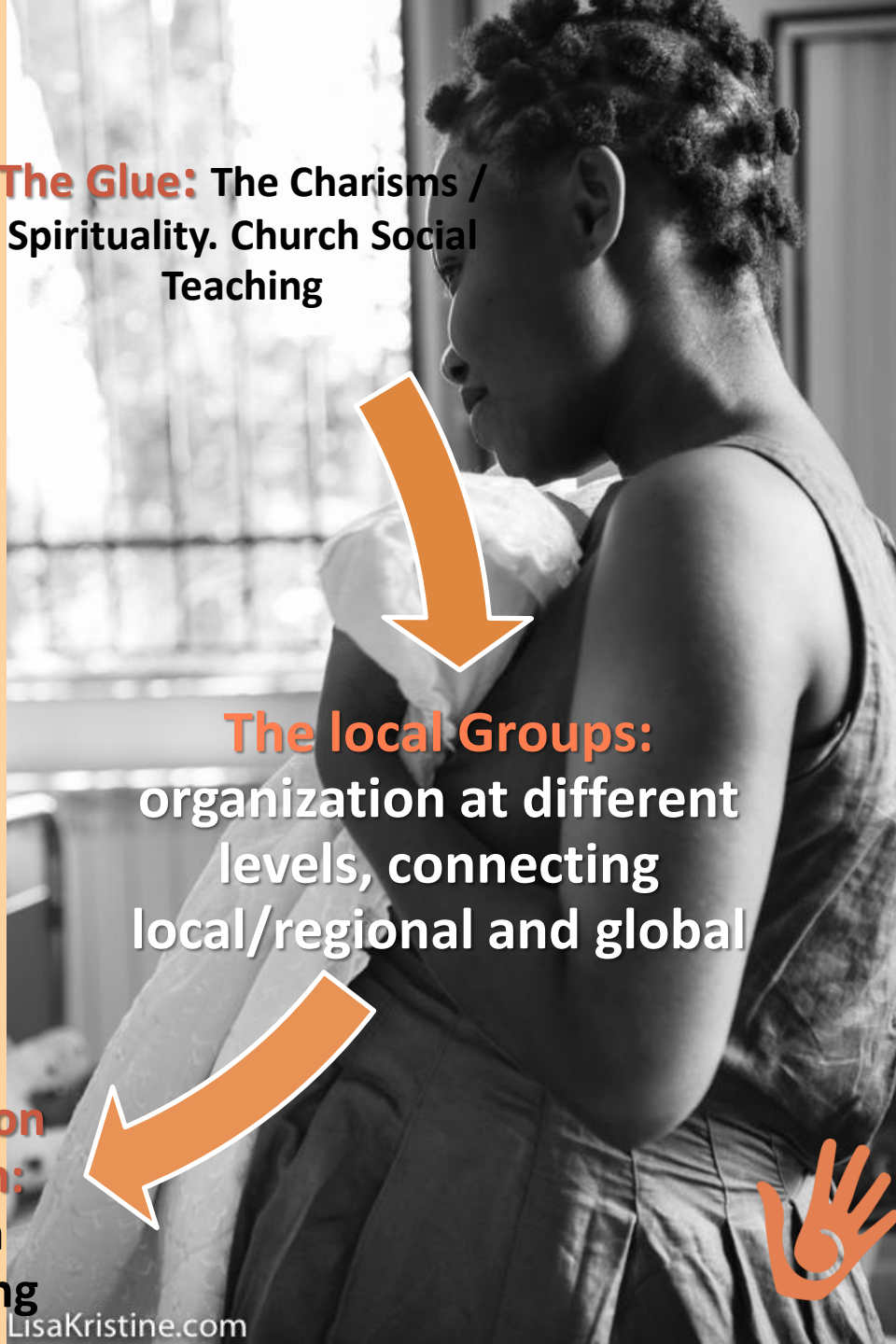
An existing Network: UISG/Conferences of Religious



The local Groups: organization at different levels, connecting local/regional and global



A Common Problem: Human Trafficking





LisaKristine.com

If you want to go fast, go alone

If you want to go far, go together

