



**imagine**

a miracle



a miracle  
**EDUCATION**

**educating  
and  
training**

- teachers
- nurses
- midwives
- community leaders

**SOLIDARITY**  
WITH  
**SOUTH  
SUDAN**



a gift  
**HEALTH**

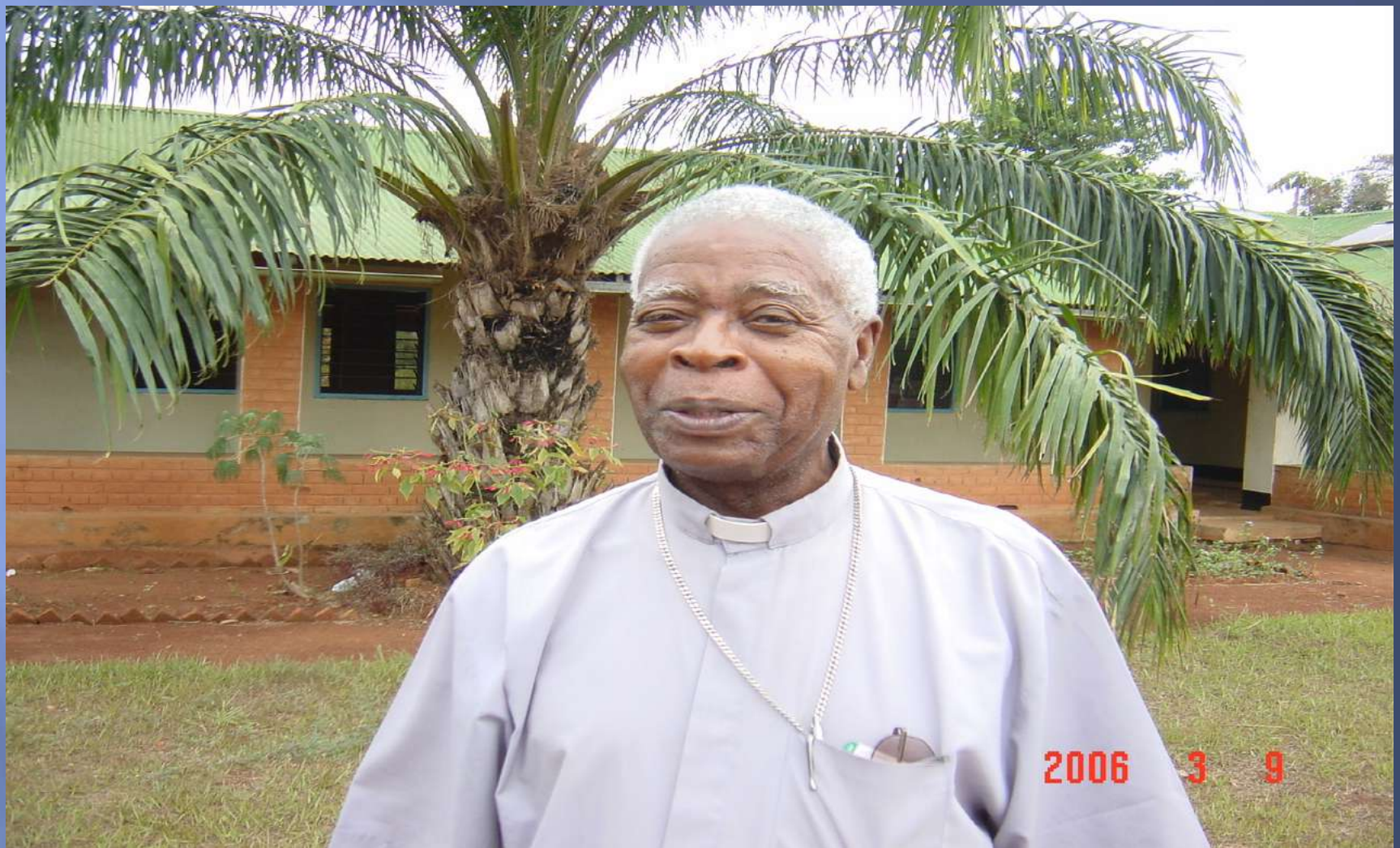


**the future**  
**AGRICULTURE**



**the people**  
**PASTORAL  
SERVICES**

**Join us in Solidarity! Share personnel, finance, expertise.**



Bishop Gasi  
Diocese of Tombura-Yambio







# Enormous Needs



# High Hopes



**.....explore where the Spirit is  
creating newness in religious  
life, especially those  
opportunities for creative  
fidelity.**

Passion for Christ, Passion for Humanity  
International Congress on Consecrated Life, 2004



....A new paradigm for consecrated life is being put together born of compassion for the scarred and down-trodden of the earth around new priorities, new models of organization and open and flexible collaboration with men and women of good will.

Passion for Christ, Passion for Humanity

LOOK FOR NEW MODELS OF:



MISSIONARY INSERTION .....

INTER-CONGREGATIONAL DIALOGUE.....

BRIDGES OF COLLABORATION.....

AS CLEAR SIGNS OF WHERE THE SPIRIT IS LEADING

a new collaborative  
model of  
religious life



“living the passion for humanity  
with...a great drive of imagination  
and creativity” (Passion for Christ, Christ  
for Humanity).

USG  
Union of  
Superiors  
General  
(Congregations  
- Male  
Religious)

Solidarity  
with  
South Sudan

UISG  
Union of  
International  
Superiors  
General  
(Congregations  
of Female  
Religious)

SCBC  
Sudan Catholic  
Bishops'  
Conference

# SOLIDARITY WITH SOUTH SUDAN



**Goal:** to respond to vital needs in South Sudan by creatively merging the talents of **MANY religious congregations and other partners** who will continue to network together in support of this project.

# SOLIDARITY WITH SOUTH SUDAN

## Goal:

- To build a collaborative network involving female and male religious congregations who could tribute according to their various capacities:
- personnel in South Sudan
- working groups: finances, expertise (fund raising, construction, financial management, report writing, logistics etc.)



## **Ministry Areas**

Education

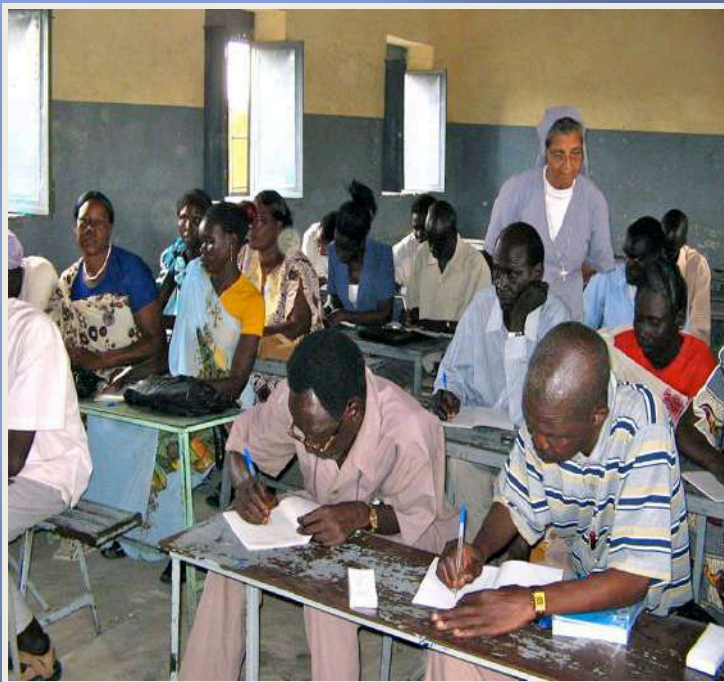
Health

Pastoral

Agriculture



# Solidarity Teacher Training







Catholic Health Training Institute  
Wau, Sudan

# PASTORAL SERVICES



**Peace Building**

**Reconciliation**

**Trauma Healing**

**Community Building**

**Leadership Training**



# AGRICULTURE—RIIMENZE AND OTHER LOCATIONS



# SOLIDARITY--SOUTH SUDAN PERSONNEL





● Malakal:  
Teacher Training  
Institute

● Wau:  
Health Training Institute

Yambio: TTC

● Riimenze:

pastoral, agriculture

Juba: Coordinating Office  
and pastoral

W  
O  
R  
L  
D  
-  
F  
A  
M  
I  
L  
Y  
-  
C  
O  
M  
M  
U  
N  
I  
T  
Y



Riimenze



Wau



MALAKAL



JUBA



Yambio

**A space opening up for a new future**



What were/are the main challenges in building/running the network?



## **1. 1. Coordination:**

Keeping the various committees that were operating in the initial stages aware of the developments within the network: fundraising, logistics, financial management, personnel for South Sudan but also for other volunteer roles

## **2. Communication:**

Keeping congregational leaders up-to-date with the developments and the needs – website, newsletters, presentations

## **3. Capacity Building:**

Building a network of congregations committed to the initial phase and the long term development of the project

#### **4. Scaling up the initiative:**

Need to increase the number of committed congregations within the network. Need to increase the number of funders in an associated network who would support the initiative in the long term

#### **5. Keeping up the momentum**

The constant change at leadership levels within congregations means that the vision and mission have to be continually shared.

#### **6. Intercultural – intergenerational – male/female**

A group of children, likely in a school or community center, are shown. Several children are wearing blue uniforms with yellow trim. One child in the foreground is wearing a white shirt and is being attended to by others. The scene is brightly lit, possibly by natural light from a window or doorway. The overall atmosphere is one of care and support.

# Solidarity

- accompany  
the people of Southern  
Sudan,  
empowering and  
supporting them  
as they rebuild their  
lives,  
their communities,  
and their societal  
structures

# Organizational Change

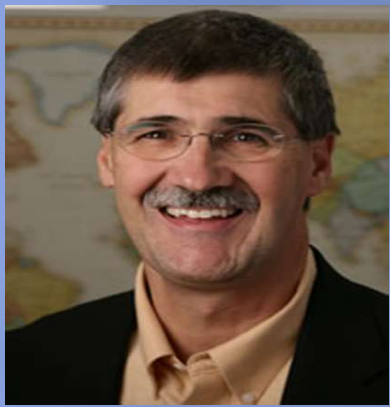
## Learning from Another Discipline



*John Paul Lederach*

### Concepts:

1. Moral Imagination
2. Web watching and weaving
3. Yeast
4. Platforms



# MORAL IMAGINATION

....as the capacity

.....to recognize turning points and possibilities

.....to imagine constructive processes

.....to give birth to what does not yet exist

.....to cultivate the art of leadership

*“Moral Imagination....The Art and Soul of Peace Building”*

# Turning Points



- ▣ Certain moments that can point people in a new direction
- ▣ Moments that are pregnant with new life which often rise from what seems barren ground

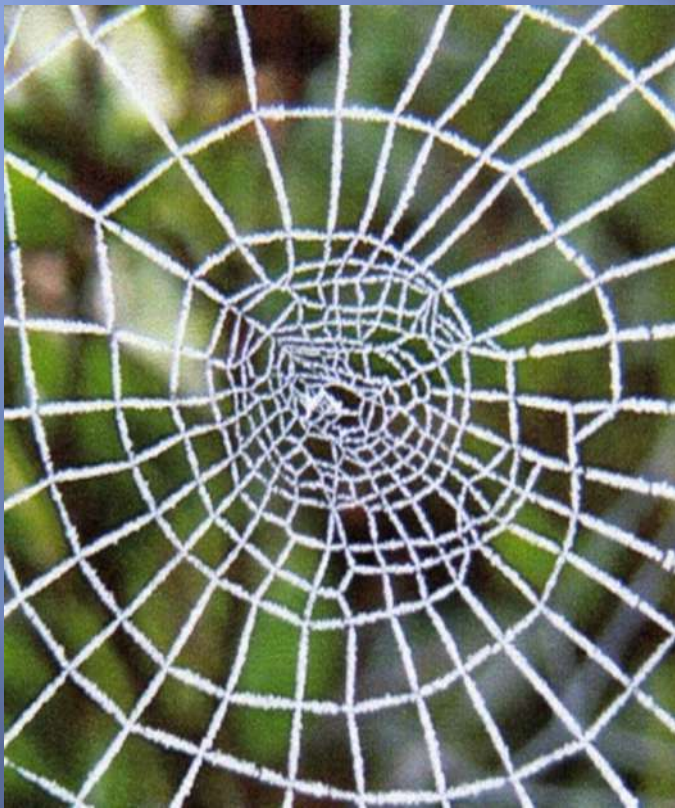
# WEB WATCHING



1. Understand the social geography
2. Think about intersections
3. Be smart flexible

# WEB WEAVING

.....working to locate strategic anchor points and intersections



1. International congregations
2. Local Church/diocesan congregations
3. Embassies to the Holy See  
Embassies in South Sudan
4. Conferences of Religious
5. Individual religious
6. Other partners





# The Yeast .....the catalyst for

.....a small group of the right people  
involved in the right place at the right  
time

....they create a pull in an organization or  
in a society

*In a network yeast groups are critical*

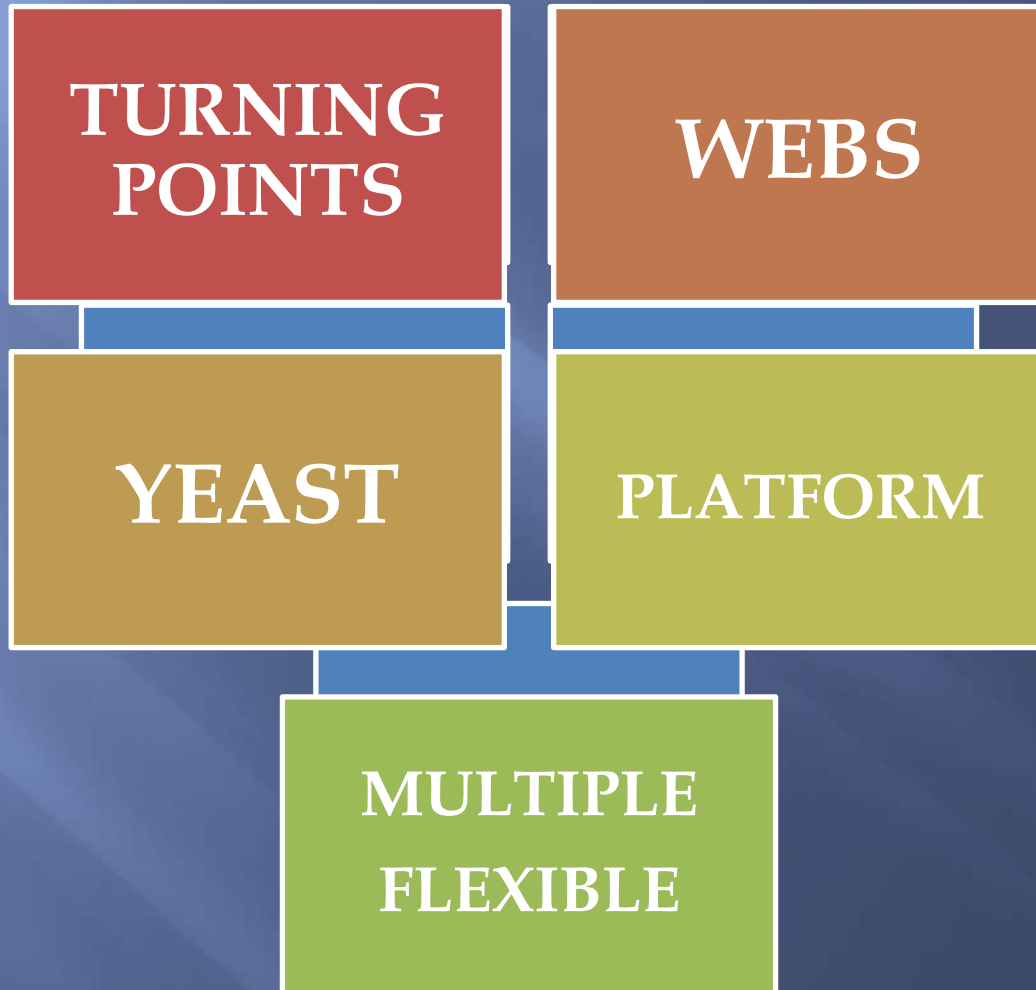
# A Transformative Platform

Yeast = small strategic group(s)  
build **Platform** - Imaginative mediative  
capacity



creating multiple webs

# Key Change Words and Phrases



# Elements of the Change Process

1.

- Small committed group

2.

- Creates a platform with others – organizations or individuals

3.

- Builds a network or multiple networks to support the initiative **networks**

4.

- Works in a smart flexible way which requires ongoing change **which requires i**